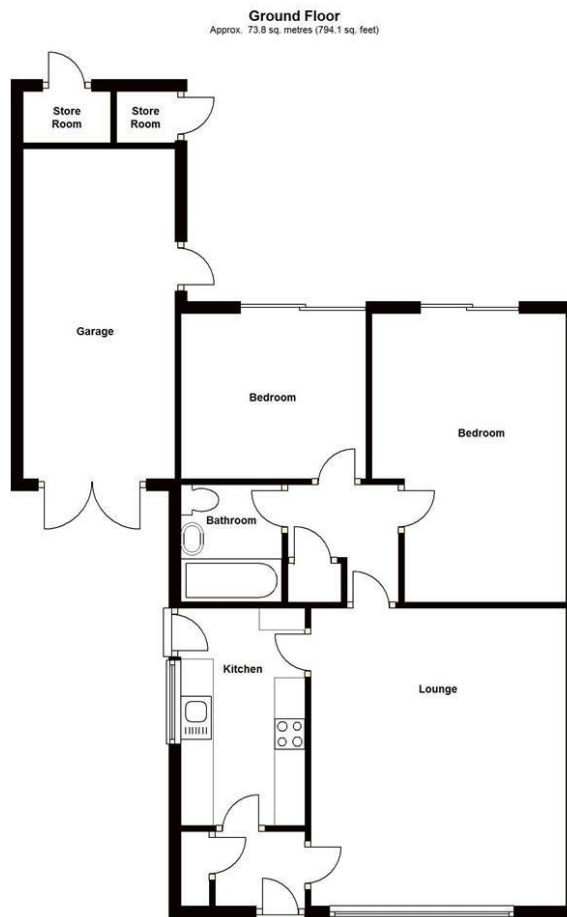




7 The Greenway, Pattingham, Wolverhampton, Staffordshire, WV6 7DA

Smartly presented and neatly appointed modern style 2 Bedroom Semi-Detached Bungalow in pleasantly established position within popular South Staffordshire village of Pattingham handy for local facilities and easily accessible to the city centre. This freshly redecorated and newly re-carpeted property briefly comprises: Hall; Living Room; attractively refitted Kitchen including built-in double oven, 4 ring gas hob, cooker hood, and some appliances; 2 good Bedrooms, both with patio doors to rear garden; superb Bathroom with white suite and shower; Garage; Gas CH from brand new boiler and uPVC double glazing; Mature private rear garden **IMMEDIATE AVAILABILITY - UNFURNISHED - SECURITY DEPOSIT £1200 OF WHICH HOLDING DEPOSIT £240 - PETS CONSIDERED (PET PREMIUM PAYABLE) **

£1,050 PCM



Total area: approx. 73.8 sq. metres (794.1 sq. feet)

We accept no responsibility for any mistake or inaccuracy contained within the floorplan. The floorplan is provided as a guide only and should be taken as an illustration only. The measurements, contents and positioning are approximations only and provided as a guidance tool and not an exact replication of the property.
Plan produced using The Mobile Agent.

